



# FITTING INSTRUCTIONS

Part Number: **5421225**  
Product **Under Vehicle Protection (UVP) Rear Kit**  
Description:  
Suited to **Toyota LandCruiser Prado 250**  
vehicle/s:

## WARNING

### NOTE THE FOLLOWING:

- ◆ This product must be installed exactly as per these instructions using only the hardware supplied.
- ◆ Do not use this product for any vehicle make or model, other than those specified by ARB.
- ◆ Do not remove labels (if any) from this product.
- ◆ This product or its fixing must not be modified in any way.
- ◆ The installation of this product may require the use of specialized tools and/or techniques
- ◆ These instructions are correct as at the publication date. ARB Corporation Ltd. cannot be held responsible for the impact of any changes subsequently made by the vehicle manufacturer
- ◆ During installation, it is the duty of the installer to check correct operation/clearances of all components
- ◆ Work safely at all times
- ◆ Unless otherwise instructed, tighten fasteners to specified torque

## ARB 4x4 ACCESSORIES

Corporate Head Office

42-44 Garden St  
Kilsyth, Victoria  
AUSTRALIA 3137

Tel: +61 (3) 9761 6622  
Fax: +61 (3) 9761 6807

Australian enquiries  
North & South American enquiries  
Other international enquiries

[sales@arb.com.au](mailto:sales@arb.com.au)  
[sales@arbusa.com](mailto:sales@arbusa.com)  
[exports@arb.com.au](mailto:exports@arb.com.au)

[www.arb.com.au](http://www.arb.com.au)

# GENERAL CARE AND MAINTENANCE

By choosing ARB under vehicle protection, you have bought a product that is one of the most sought after 4WD products in the world. Your under vehicle protection panels are a properly engineered, reliable, quality accessory that represents excellent value.



- While these panels have been engineered for strength and functionality, care and good judgment should be taken when traversing difficult off-road conditions to minimise damage to panels and vehicle.
- During servicing when panels are removed, ensure fasteners are re-fitted to the correct torque values.
- Inspect panels visually on a regular basis. Dirt and foreign matter should be washed out to minimise build-up around hot components. **BE VERY CAREFUL** when removing foreign matter with hands while vehicle is hot or running. Replace any components as necessary. This service can be performed by your local authorized ARB Stockist.

## FITTING REQUIREMENTS

### REQUIRED TOOLS FOR FITMENT OF PRODUCT:

Metric Socket Set	Pliers
Socket Wrench	Torque Wrench
Pry Tool / Trim Removal Tool	

### HAVE AVAILABLE THESE SAFETY ITEMS WHEN FITTING PRODUCT:

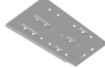








Protective eyewear 	Hearing protection 
--	--

**NOTE:** 'WARNING' notes in the fitting procedure relate to OHS situations, where to avoid a potentially hazardous situation it is suggested that protective safety gear be worn or a safe work procedure be employed. If these notes and warnings are not heeded, injury may result.

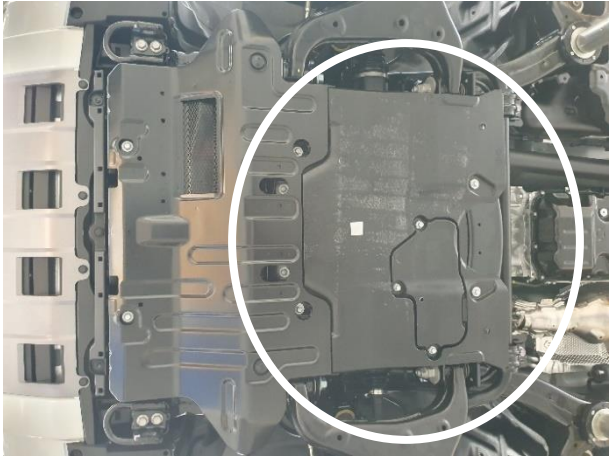
### FASTENER TORQUE SETTINGS:

SIZE	Torque Nm	Torque lbft
M8	22Nm	16lbft
M10	44Nm	32lbft

## PARTS LISTING

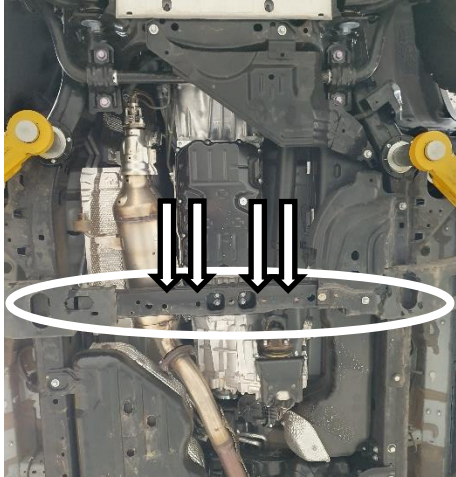
APPLICATION.	PART NO.	QTY	DESCRIPTION
Transmission Protection	4655745	1	 <b>TRANSMISSION PANEL</b>
	6151730	2	 <b>FLANGE BOLT HXHD M8 x 1.25 x 20</b>
	6152188	4	 <b>FLANGE BOLT HXHD M8 x 1.25 x 25</b>
	3197171	2	 <b>NUT PLATE M8</b>
Transfer Case Protection	4655747	1	 <b>TRANSFER CASE PANEL</b>
	3759081	2	 <b>NUT STICK M10</b>
	6151232	2	 <b>BOLT HXHD M10 x 1.5 x 30</b>
	4581040	2	 <b>WASHER M10 x 25 x 3</b>
	4584366	1	 <b>WASHER M10 x 30 x 4</b>

## FITTING PROCEDURE



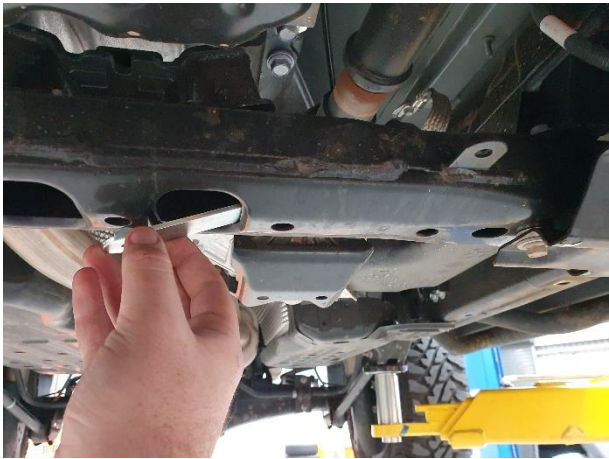
**Note:** It is recommended that this UVP is installed with the Front UVP Kit (5421240).

1. If front kit is not installed, remove the rear most OEM under vehicle protection panel (plastic).

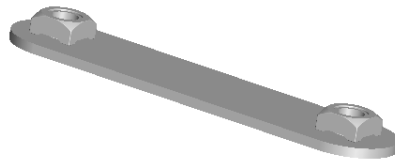


2. Identify the transmission support crossmember, and the four holes that will be used for mounting.

If fitted, use a pry tool to remove the plastic cover, concealing the two large openings in the centre of the cross member.

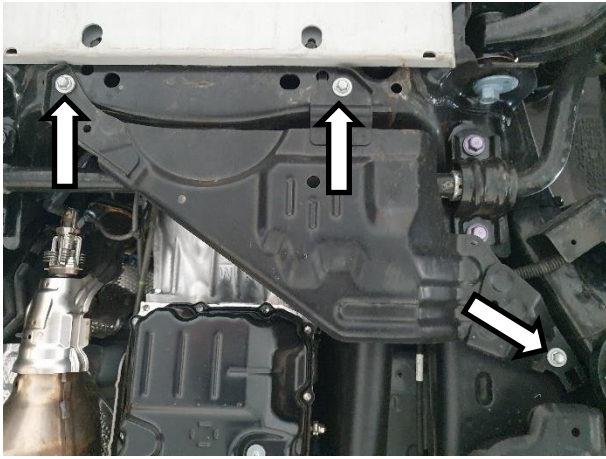


3. Insert the nut plate 3197171 into each side of the crossmember, ensuring that the flat side of the plate is facing down.



4. Align the nut plate inside the crossmember to the holes shown. Repeat on other side.

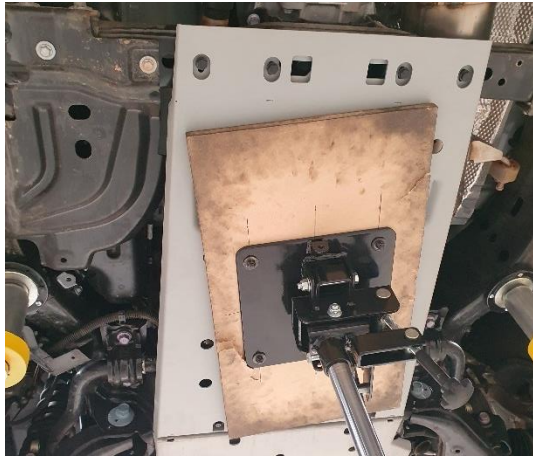
## FITTING PROCEDURE



**NOTE:** This step pertains to 'Altitude' models or other models fitted with a disconnectable sway bar.

5. Identify and remove the disconnectable sway bar cover panel, and remove the three bolts and panel as shown.

These parts may be discarded.

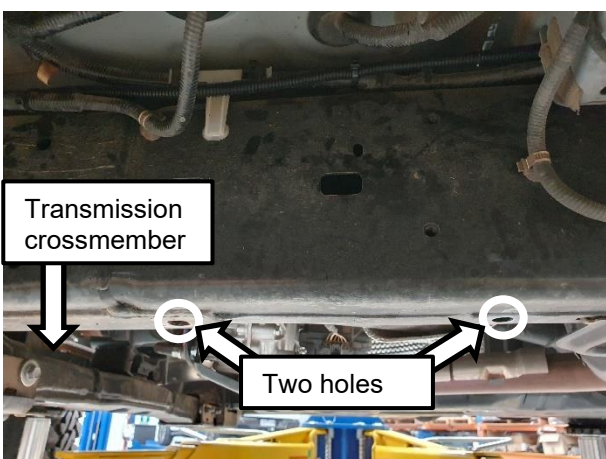


6. Using assistance from another person or a mechanical lifting aid, such as a transmission jack, lift the Transmission Panel 4655745 up to the vehicle, aligning the bolt holes as shown.

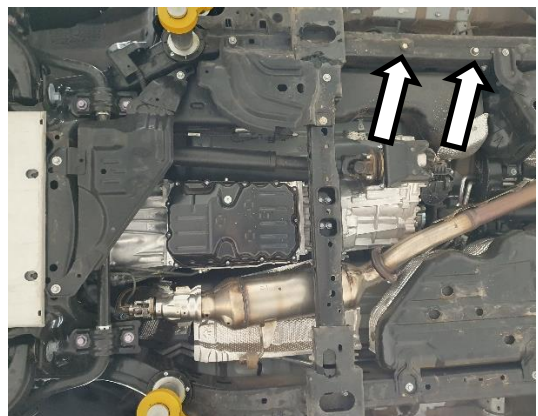


7. Loosely fasten the panel at the front with the two M8 x 20 flange bolts 6151730 and the four M8 x 25 flange bolts 6152188 at the rear into the nut plates.

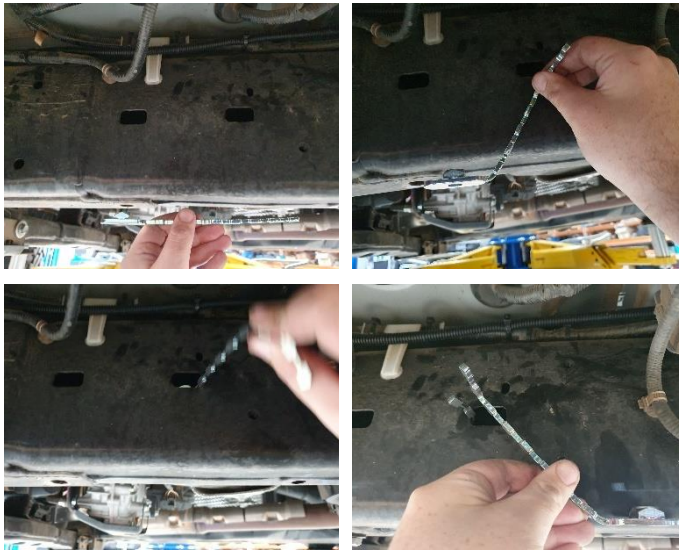
**Note:** Do not tighten the M8 Bolts at this stage, leave plenty of thread at the rear of the panel, there should be a visible gap.



8. Identify the two holes in the passenger side of the chassis, rearward of the transmission crossmember as shown.



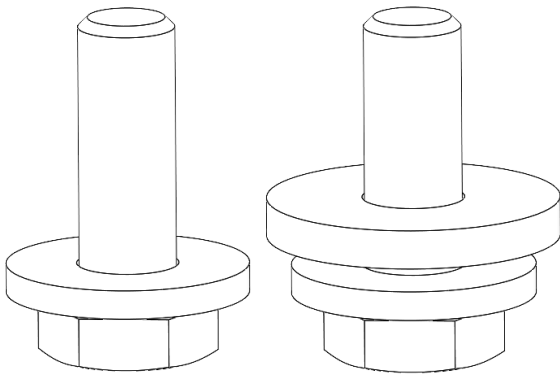
## FITTING PROCEDURE



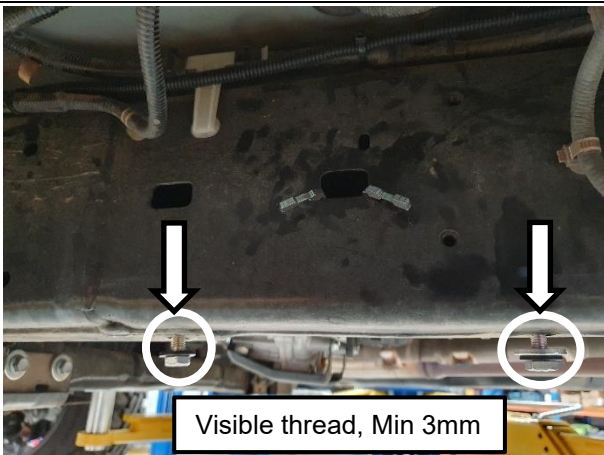
9. Use pliers to shape and insert the two nut sticks 3759081 into the side of the chassis, aligning the flat surface against the holes identified in step 8.

**Hint: insert a screwdriver into the hole and nut to assist in aligning the nut stick, or tighten the M10 bolts into the nut sticks to pull the nut stick flat.**

**Hint: bend the tails over so that they hook onto the chassis to prevent the nut stick getting lost in the chassis.**



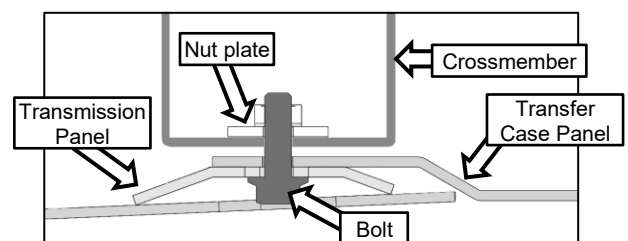
10. Assemble the two M10 Bolts in these two configurations shown, with the smaller washer sliding on first and the larger washer sliding onto one of the bolts.



11. Thread the two M10 assemblies into the nut sticks, through the chassis, the bolt with the large washer should be the most rear bolt.  
Leave these bolts loose, with plenty of thread exposed at this stage.



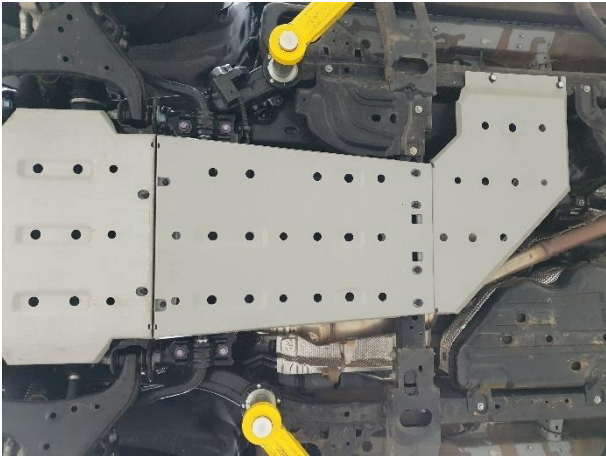
12. Lift the Transfer Case Panel 4655747 up to the rear crossmember, the transfer case panel will slide between the Transmission Panel 4655745 and the chassis, using the open-ended slots.  
(See Cross-section Diagram)



## FITTING PROCEDURE



13. Slide the Transfer Case Panel 4655747 towards the passenger side of the vehicle, engaging in all the slots as shown.
- The bolt with the large washer should be in the rear slot, with the large washer above the panel, and the small washer below the panel, as pictured.



14. Once panels are aligned, ensure that each slot has a bolt, and the panels can be mounted flush against the chassis.
- Torque bolts to specification.



M8 - 22 Nm.



M10 - 44 Nm.

## FITTED PRODUCT

The Toyota LandCruiser Prado 250 Under Vehicle Protection Rear Kit (5421225) is now installed.

